

When  
you need  
PRECISION



*m e a s u r e m e n t   s o l u t i o n s   s i n c e   1 9 4 2*

**bombay**  
**Tools** SUPPLYING  
a g e n c y



Be Perfect...

Mitutoyo

jafuji  
india

ElektroPhysik

WYLER

DIATEST



BOMBAY TOOLS SUPPLYING AGENCY is a pioneer in the field of metrology and inspection gauges. Established, over 75 years back, in 1942, Bombay Tools Supplying Agency has dedicated its growth to precision and quality.

Today, the company markets a wide range of measuring instruments of world-renowned brands. It also exports their local flagship brand JAFUJI products to Europe and South East Asia.



#### **Pan India Network**

Bombay Tools Supplying Agency is well networked to deliver the finest products at the best possible prices, always on time. Our presence all over India includes Kolkata, Chennai, Pune, Bengaluru, Hyderabad, Delhi, Ahmedabad, Baroda, Nashik, Coimbatore.

#### **Partnerships**

Bombay Tools in its determination to provide world class products to the Indian customer has partnered with globally renowned brands. Bombay Tools is proud to be the preferred partners of the following companies

*MITUTOYO, SHIMPO, RF, CITIZEN* from Japan

*WYLER, SYLVAC, TESA, CARY* from Switzerland

*ELEKTROPHYSIK, DIATEST, IBR, KROEPLIN* from Germany

*PLASTIFORM* from France *MICROTECH* from Ukraine



# Be Precise

*Being Precise about Your Precision... for over 75 years*

Our long standing partnerships with these iconic brands ensure that our customers get the latest technology and complete measurement solutions.



#### **Mitutoyo**

Today, BombayTools is the largest authorised distributor and stockist of Mitutoyo in India. We offer applications support, product support, product information and service with genuine spares for all Mitutoyo products.

#### **Calibration And After Sales Service**

Specialized calibration and repair services are available at our service hubs in Mumbai, Delhi and at Hyderabad. Our facility in Hyderabad is accredited to the National Accreditation Board for Testing and Calibration Laboratories (NABL)

**PLASTIFORM®**



**Kroeplin**  
Längenmesstechnik



**MICROTECH**

# Mitutoyo

Japan

www.mitutoyo.co.jp

**M**ITUTOYO is the worldwide leader in precision measuring instruments. It offers the most comprehensive range in metrology equipment with excellent quality. BombayTools is the largest authorised distributor of Mitutoyo in India. BombayTools offers sales and support to make your enquiry as fast and efficient as possible. We market the entire range of Mitutoyo products from micrometers, digital calipers to profile projectors. We offer applications support, product support, product information and service for all Mitutoyo products.



• **Digital Micrometer** •

Bigger sizes of Measuring range: more than 300mm also available.



• **Digimatic V-ANVIL Micrometer** •

It measures the outside diameter of cutting tools (such as taps, reamers, end mills) which have three or five flutes. V-anvils with a centreline groove are available for measuring the pitch diameter of taps by the single-wire method.



• **Interchangeable Anvil Micrometer** •

A Mitutoyo non-digital micrometer that accepts easily interchangeable anvils to enable a wide variety of measurement, such as tubing thickness, shoulder-edge distance and rivet height. A ratchet stop guarantees repeatable measurement.



• **Quantumlike** •

Faster measurement is achieved by using a coarser thread which feeds the spindle by 2mm per revolution of the thimble instead of the standard 0.5mm. Trials show that a reduction in positioning times of 60% and measuring times of 5%\* can be obtained, compared with a conventional micrometer.



• **ABS Digimatic Caliper** •

Abundant lineup of calipers such as models with output and with carbide-tipped jaws.



• **Portable surface roughness measurement Surftest SJ-210** •

Light, compact body and simple operation - Displays waveforms on the color LCD screens.

• **Digimatic Indicator IDC** •

Allows arbitrary calculation compensation of spindle displacements.  
- Widely used for curvature measurement, bore diameter measurement, etc.







• **ABSOLUTE Digimatic Bore Gauge** •

*For easy and accurate measurement of inside diameter.*



• **Linear Height Gauge 2D** •

- Extraordinarily high-accuracy and abundant measuring functions - Air-floating travel and automatic measurement.
- High-performance height measurement instrument with sense of height gauge.



• **High Accuracy Digital Micrometer L.C. 0.0001mm** •

*The High Accuracy Digimatic Micrometer (0.1micron resolution) delivers higher accuracy without sacrificing operability.*



• **Gauge Block SET** •

*Steel and ceramic gauge blocks are available in different grades.*

• **Absolute Digimatic Height Gauge** •

*Features a double column structure that ensures high measuring accuracy, SPC data output, switchable resolution and coarse to fine feed switching.*





**India**

www.bombaytools.com

The JAFUJI brand is established and manufactured by Bombay Tools. It encompasses the entire range of critical accessories like magnetic dial stands, comparator stands, v blocks and granite surface plates. Besides being sold in India JAFUJI products are exported to several countries like Italy, Germany, Switzerland, South Korea, Israel and Thailand.



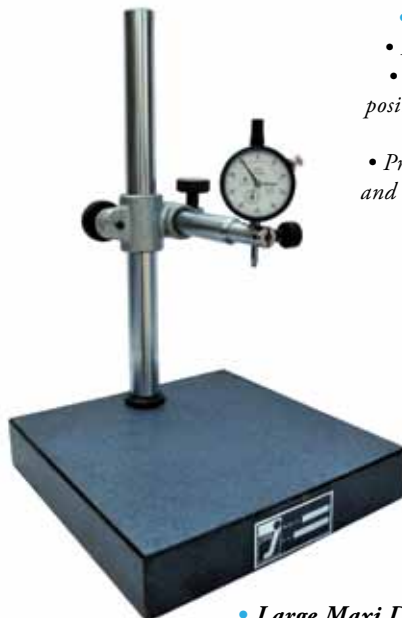
• **Push Pull Gauge Stand** •

- Ideal Test Stand for force gauge.
- Loading lever can be set in any position by nine degree increments for ease of operation.
- Precisely machined rack and pinion and dovetailed slide assure smooth and precise motion.



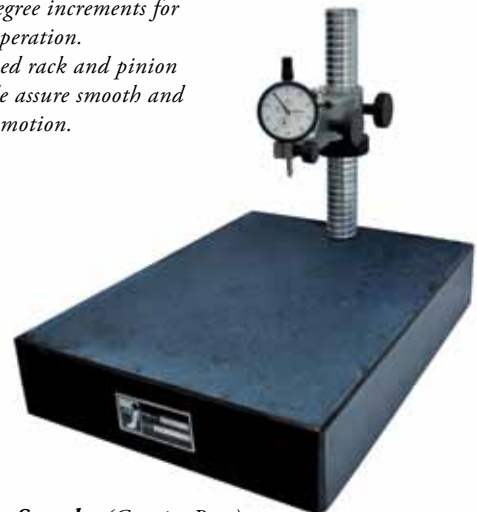
• **Mini Dial Indicator Stand** •

*This Measuring stand is particularly suitable for quick and accurate inspection of small flat or round works. It is also readily adaptable as a thickness gauge.*



• **Large Maxi Dial Indicator Stand** • (Granite Base)

*JAFUJI' Granite Comparator stands are made from Rigid Granite Base. They are free from burrs, pile ups, rust and deterioration over time. These stands satisfy all types of precision measuring assignments, including comparative measurement.*



• **Heavy Duty High Precision Bench Centre** •

*Table and centre heads are made from closed cast iron, seasoned, stress relieved and finished on the working face and reference side edge of the table by hand scraping to meet with the required accuracy as per BIS Standards.*



• **Magnetic Stands** •

*With fine adjustment clamp and roller for quick setting.*





• **Bore Measuring Stand** •

For quick checks of bores in small work pieces. Hardened anvil plate can be raised with lever, thus moving test piece into position.



• **Flexible magnetic stand** •

- The Dial gauge can be locked in any desired position via centralised clamping.
- Fine Adjustment has been provided.



• **Magnetic V blocks** •

Jafuji Magnetic V Blocks with hardened surface at the main v angle and the bottom holding surface are equipped with hardened plates which ensure extra resistance.



• **Steel V blocks** •

The V – Blocks have means of the clamp the work can be held in the block.



• **Granite Surface plates** •

JAFUJI GRANITE SURFACE PLATES has a material strength, which is three times greater than that of ordinary granite and it is super rigid. To obtain the same rigidity, a surface plate made of ordinary granite would require a 44% greater thickness. These qualities provide increased wear resistance and a much longer life span.

• **Micrometer Stand** •

Finely finished Micrometer Stand can be adjusted to any position.

Provides a desirable measuring position and angle for inside and outside Micrometers and many other instruments.



# ElektroPhysik

Germany

www.elektrophysik.com

ElektroPhysik is one of the leading manufacturers of measuring instruments for the surface technology. Being a pioneer in the field of non-destructive coating thickness measurement, ElektroPhysik has successfully advanced new product developments along with international standardization of the coating thickness measurement.



## • **MIKROTEST** •

*MikroTest is an extremely robust coating thickness gauge, which measures the thickness of non-magnetic coatings on steel substrates on the magnetic attraction principle.*



## • **MINITEST 70** •

*The MiniTest 70 is a lightweight and handy coating thickness gauge (dft gauge) in a pencil format with a built-in sensor. It enables non destructive measurement of non-magnetic coatings on a ferromagnetic substrate (steel) & insulating coatings on conductive substrates.*



## • **MINITEST 650** •

*Rugged coating thickness gauge with fixed external probe for all non-magnetic coatings on steel and all insulating coatings on non-ferrous metals.*



## • **MINITEST 700** •

*The coating thickness gauges by ElektroPhysik from the MiniTest 700 series rank among the most accurate and versatile coating thickness measuring devices.*



## • **SMARTEST** •

*SmarTest is an intelligent wireless sensor for non-destructive coating thickness measurement and relays sensor data via Bluetooth to your tablet, smart phone or to the coating thickness gauge.*





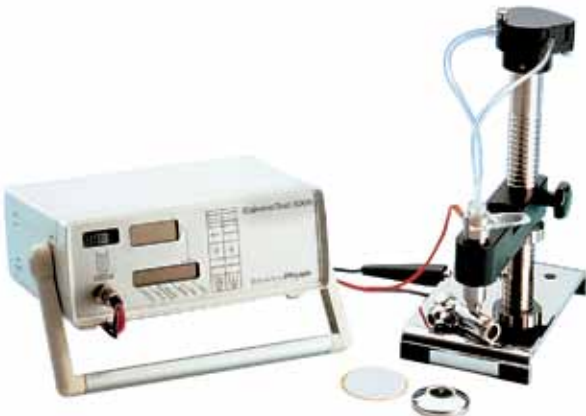
• **MINITEST 7400FH** •

Professional, high-end wall thickness measuring device for non-destructive measurements of up to 24 mm. The devices are suited for thickness measurement of non-magnetic materials such as glass, synthetic materials, stainless steel and composites and even complex component geometries can be measured.



• **New Minitest 2500/4500** •

The New MiniTest 2500/4500 Coating Thickness gauges offer a large range of probes, different calibration methods and evaluation options for a wide range of tasks in the field of coating measurements.



• **GALVANOTEST** •

The GalvanoTest is a device to measure coating thickness based on the Coulometric principle and be used for virtually all electroplated single or multi-layered coatings. The electroplated coatings like chromium, nickel, cadmium, copper, brass, silver, gold, tin, zinc can be measured on metals or non-metals.

• **TT-100** •  
The DELTA is hand held microprocessor controlled thickness gauge specifically designed for measuring the thickness of metallic and non-metallic materials e.g. aluminium, titanium, plastics, ceramics glass and any other good ultrasonic wave conductor as long as it has parallel top and bottom surfaces.



• **QUINTSONIC 7** •

This gauge is specially designed for non-destructive coating thickness measurement of paint, varnish, plastics and other insulation coatings applied on wood, plastics, glass, ceramics etc. as well as for polymer layers on metals. As a special feature, the gauge offers the possibility to measure the total thickness as well as the individual layers of a multi-layer system in only one measuring process.



• **HARDNESS TESTER** •

• Impact size, easy operation.

- Wide measuring range in HLD, direct display of converted hardness values in HB, HRB, HRC, HRA, HV, HS
- High applicability, can be used for hardness testing of most metals. • Test at any angle even upside down.



# WYLER

**Switzerland**

www.wylerag.com

**W**YLER AG located in Winterthur, Switzerland has a tradition of more than 75 years in the field of precision inclination measurement. Thanks to the use of most modern technologies and the consequent and continuous development of new products WYLER has an international reputation as the leading company for high precision inclination measuring equipment and systems. The product range starts from precision spirit levels and goes to complex electronic measuring systems including the correspondent data acquisition software.



• **Clinometer 80** •

The CLINOMETER 80 is particularly suitable for precisely measuring angular deviation in any inclination on flat surfaces and shafts (with prismatic base only). Measuring range  $\pm 180$  degrees.



• **Blue Clino** •

High Precision over the whole measuring range of  $\pm 60^\circ$  with integrated temperature compensation. Rugged housing, rust protected, with prismatic bases made out of either aluminum hard anodized or cast iron.



• **Blue System SIGMA** •

A BlueSYSTEM SIGMA normally consists of two inclination measuring instruments BlueLEVEL and an indicating unit BlueMETER SIGMA. Depending on the application, the BlueMETER SIGMA can also be connected to a PC with evaluation software, allowing the on-line evaluation and presentation of the measured values.



• **Clinotronic Plus** •

The CLINOTRONIC PLUS provides a measuring capacity of  $\pm 45$  degrees. Four precisely machined exterior reference surfaces assure accuracy and repeatability of measurements in any quadrant.



• **NEW Clinotronic S** •

The Clinotronic S is building on the success of the Clinotronic PLUS. A precise instrument with wireless data transmission to measure inclinations and is supplied with the WylerCONNECT MINI, a Bluetooth® USB-communication module can be connected to an Android™ or iOS™ device, which can then be used as remote display.



WYLER provides easy to use software for making reports, easy visualisation of checking parameters and for storing data.





• **Horizontal spirit level 55 "SPIRIT"** •  
The HORIZONTAL SPIRIT LEVEL 55 SPIRIT is suitable for measurements on horizontal surfaces and shafts.



• **Magnetic spirit level 48 SPIRIT** •  
The MAGNETIC SPIRIT LEVEL 48 SPIRIT is a universal spirit level, particularly suitable for measurements on vertical and horizontal surfaces and shafts.



• **Digital Nivel Swiss** •  
(formerly NIVELTRONIC) equipped with two prismatic measuring bases in rectangular position to each other for measuring flat surfaces and shafts (diameters Ø 20 ... 120 mm) horizontally or vertically. This makes the instrument extremely suitable for adjustments or checks on rectangular geometrical elements of machine tools and structures.



• **BLUE LEVEL – 2D** •  
The new Blue-LEVEL-2D combines for the first time two high-precision inclination sensors in a compact housing together with an integrated graphical display.



• **Magnetic Angle Spirit Level 47** •  
The MAGNETIC ANGLE SPIRIT LEVEL 47 is suitable for measurements on vertical surfaces and shafts. The magnetic inserts assure an excellent adhesion to vertical shafts and surfaces.



• **Universal Angle Level – 64** •  
This is particularly suitable for measurements on vertical surfaces and shafts. The tubular level can, however, also be used for measuring on flat surfaces.





**Germany**

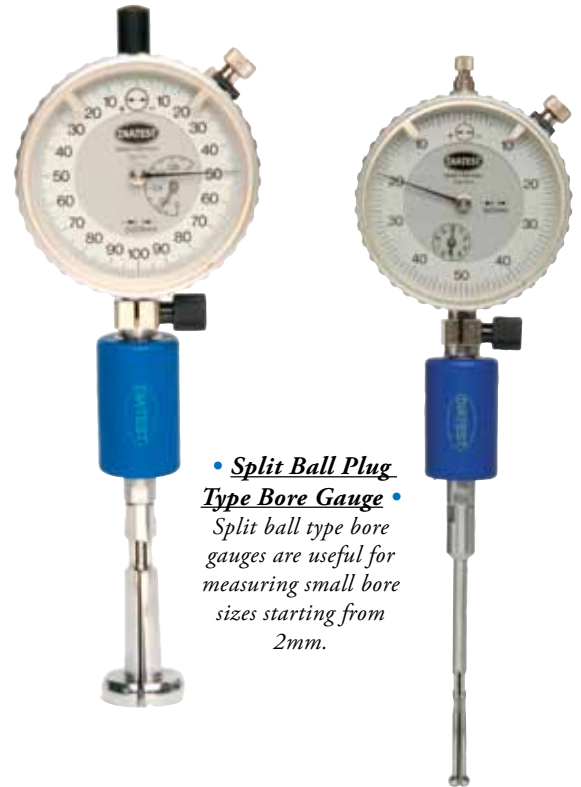
www.diatest.com

**D**IATEST manufactures high-precision bore gauging instruments and offers measuring solutions. The name DIATEST guarantees worldwide quality, expertise and safety. Future-orientated manufacturing technology, well trained precision engineering technicians and engineering knowledge guarantee highest quality standards. Whether standard or customer specific solutions.



• **Gear Checking Gauge** •

DIATEST offers solutions for internal and outer gear gauging, as hand tools or with a measuring table. They can also be used for measurement of conicity and ovality. Also applicable for spiral gears and serrations with even or odd-numbered teeth.



• **Split Ball Plug Type Bore Gauge** •

Split ball type bore gauges are useful for measuring small bore sizes starting from 2mm.



• **Chamfer Gauge** •

Indicating measuring instruments for diameter measurement of conical bores, external cones or 45° chamfers



• **BMD Plug Type Bore Gauge** •

Easy-to-use, self-indicating and self-centering bore gauge for the measurement of inner and outer diameter, with highest precision and absolute accurate results.





• DIGITAL TD-Gauge •

Both solutions measure two values at the same time: Both measure the depth, but whereas one measures the inner diameter, the other one detects No-Go gauges in cylinder bores or threads.



• DIA COME System •

Flexible and sturdy measuring table for measurement of I.D. and O.D.

• External measurement with gears •



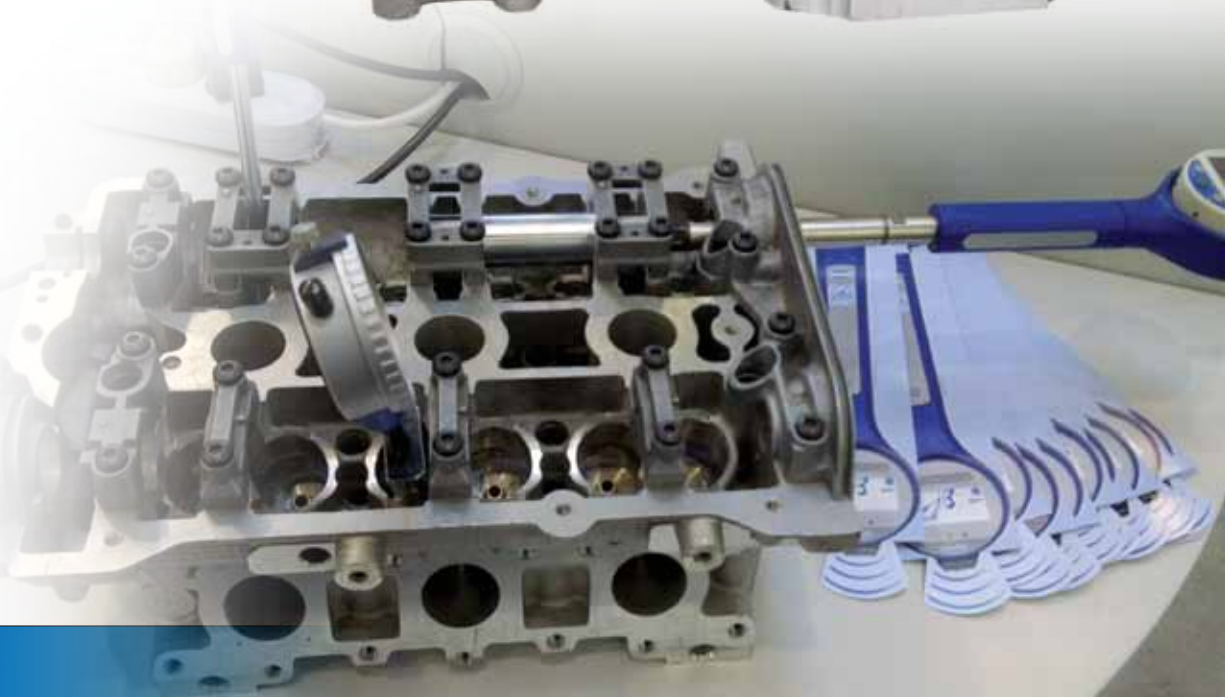
• Special Application BMD Plug for External Dia. Measurements •



• Special Application BMD Plug for Internal Dia. Measurements •



• Special Application •





**France**

[www.plastiform.info](http://www.plastiform.info)

Headquartered near Paris in France, RIVELEC markets its technical products under the brand PLASTIFORM®, and provides for more than 35 years innovative and alternative solutions for metrology control, quality control and a whole host of other applications. Originally developed for the French space program to carry out Non-Destructive Testing (NDT) by Dimensional Print Moulding, PLASTIFORM® products are now a benchmark in the most demanding fields



• Avoid Destructive Testing •

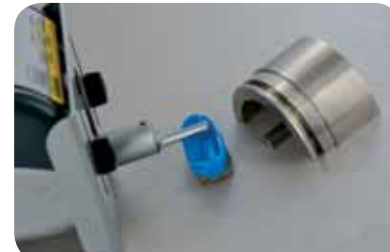
Stop destroying valuable components measure with Plastiform.

• Dimensional Print Moulding •

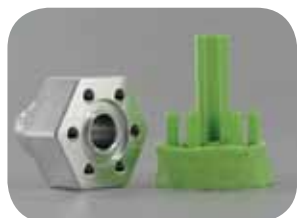


• Internal Complex Forms •

• Indirect Control Of The RA (Roughness Control) •



• Control All Kind Of Shapes And All Type Of Parts •







**sylvac**

**Switzerland**

www.sylvac.ch

**S**ylvac based in Switzerland, a region described as the cradle of cutting-edge microtechnology, Sylvac SA develops, designs and manufactures digital measuring systems and instruments for industrial use.



• **Bore gauge Xtreme 3**  
**Holematic BT** •

Internal measuring instruments made of interchangeable 2 or 3 points mechanical heads and electronic units with digital display, integrated in the micrometer bodies or in pistol grips guaranteeing a sure and fast measurement.



• **Digital Indicator With Bluetooth** •

integrated for wireless data transfer.



• **Height Gauge HI CAL** •

Hi Cal can measure internal and external diameters, centerlines, heights, thicknesses, depths & surfaces.



• **Special Caliper for Internal Measurements** •

Integrated Bluetooth \* Smart data transmission with Interchangeable round polished anvils for measuring internal grooves.



• **Digimatic Vernier Caliper with Bluetooth** •



• **Measuring Bench** •

The bench tables are designed to check dimensions up to 50 mm (depends on model), these bench tables can be equipped with different kind of tables to fit your needs as well as with several types of anvils of any shapes.



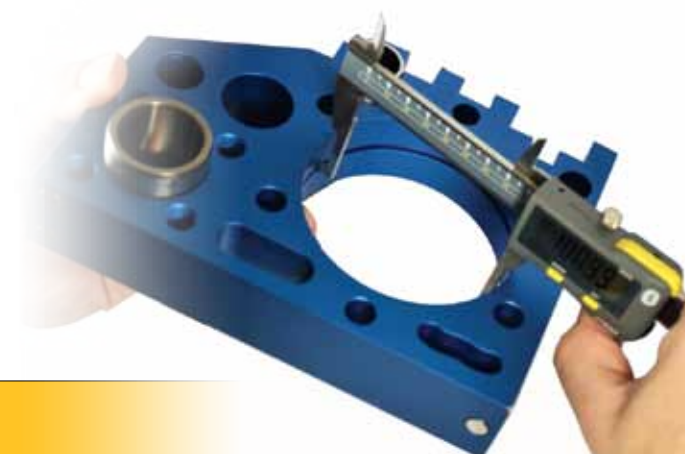
• **PROBES** •

Capacitive absolute measuring probes, plunger type having Resolution 0.0001 mm and Measuring range from 5 to 25 mm. Probes can be Plain bearing or ball bearing, integrated vacuum lifter on P5 & are compatible with all Sylvac digital units only.



• **Ultra Light caliper UL4** •

Extremely light weight Digital Caliper with measuring range upto 10 meters.



# Kroeplin

## Längenmesstechnik

**Germany**

[www.kroeplin.com](http://www.kroeplin.com)

**K**roeplin is in development and production of handy reliable and precise gauges for the measurement of lengths and thicknesses, especially for the metalworking industry.



• **Mechanical Internal Measurements** •  
*Internal measurement of grooves.*



• **Digital Internal Measurements** •  
*Electronic internal measurements with data output.  
Measuring Range possible upto 550mm.*



• **Mechanical External Measurements** •  
*"External measurement", for example wall or material thickness.*



• **Digital External Measurements** •  
*Electronic external measurements with data output.  
Measuring Range possible upto 550mm.*



• **Aerosol Measurement for clinch Diameter** •

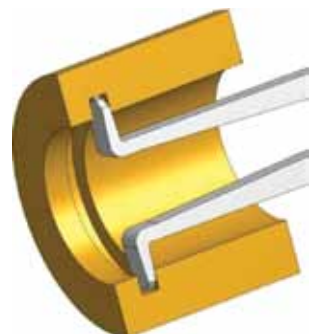
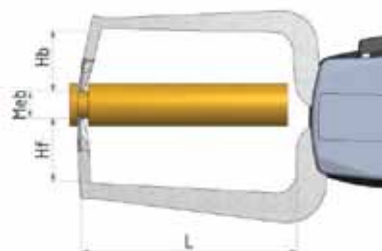
*Measurement of different critical dimensions possible for Aerosol spray cans in the Kroeplin Aerosol range.*



• **3 Point Gauge** •



• **Aerosol Measurement for clinch Height** •







**TECHNOLOGY**

**Switzerland**

www.tesatechnology.com

**E**stablished in 1941 and headquartered in Renens, Switzerland, TESA SA manufactures and markets precision measuring instruments that stand for quality, reliability and longevity. For more than 70 years, TESA has distinguished itself in the market through its excellent products, its unique expertise in micromechanics and precision machining as well as its proven experience in dimensional metrology.



• **Digital Vernier Caliper** •



• **Display Unit For Probes** •

Electronic length measuring unit with both analogue and digital display; 2 probe inputs; RS 232 data output.



• **Surface Roughness Tester** •

Ideally suited for high-precision measurements on the shop floor or in the inspection Laboratory.



• **NEW Tesa Micro Hite M** •

Due to its ease of use, each instrument of the MICRO-HITE range conveniently fills the gap between the traditional measuring instrument and the sophisticated measuring machine. Featuring outstanding performance thanks to its advanced functions, when it comes to validating the dimensional compliance of parts batches ranging from unit to large series, it truly finds its place.



• **USB Probe** •

Universal inductive probes for common applications, especially those using multigauging devices



• **Digital Indicator** •



• **Dial Test Indicator** •



• **Unimaster** •

Accurate, robust and easy-to-handle TESA UNIMASTER is used to measure extra large diameters. It is similar to internal micrometers with two-point contact with the workpiece being measured.





**Ukraine**

www.microtech.ua

**M**icrotech is the producer of innovative measuring instruments from Ukraine. They hold several patents for their unique instruments like extra large size micrometers and calipers.

## Data Transmission Industry 4.0/IOT

**W**e offer complete consultation through our domain experts for integrating your data. Measure and send data directly to any PC, tablet, mobile phones or even on the cloud.



### • Tablet Caliper •

*Latest innovation in calipers with built in computer with large touch screen and optimal measuring force module. Great features include mathematical error compensation, FORMULA mode (calculation), GRAPH results, Main functions like Min/Max, TOL, Go/NoGo, etc.*



### • Large vernier calipers •

*Measuring range up to 20000 mm (20 meters). Built in Wireless data output module. Temperature compensation is also possible. Highest accuracy.*



### • Big size micrometers •

*Measuring range up to 10000 mm (10 meters). Wireless data transfer to Windows PC or Android devices. Highest Accuracy.*

We offer the following services:

- Enabling IOT in your measurement devices
- Scaling up to industry 4.0
- Integration of hardware with software for complete data analysis
- Apps on Android and Apple IOS for readings directly on tablets / mobile phones
- Measuring instruments with PLC integration



### • Connectivity of multiple instruments •

*connect upto 120 instruments together with wireless transmission of data directly to a PC-tablet or mobile phone.*



### • Easy conversion of existing instruments •

*Easy to fit wireless data transmitters on your existing measuring instruments to make them IOT ready !!*



### • PLC/direct machine interface •

*Connect directly with PLC/analogue outputs*



## Also Available

We provide for an entire range of measurement technology and products to measure torque, temperature, force and various other parameters.

Don't find what you are looking to measure in this brief catalogue of our products. Let us know and we will solve your measurement needs.

We have 75 years of experience and worldwide partners to assist your requirements



• **Torque Wrenches** •  
Various Torque Wrenches of reputed brand available



• **Steel Rules & Taper Gauges** •  
High Quality Stainless Steel Rules, Squares & Taper Gauges from Shinwa Japan



• **Dial indicators with data output** •  
Analogue indicators with limit LED's, output and even 0.5um resolution from CITIZEN Japan



• **Force Gauge / Push Pull Gauge** •  
Digital Force Gauges with 180° reversible display & dual labeled keypad for both push, pull applications. These instruments are utilized in a variety of applications such as, incoming quality inspection, finished goods testing, R&D or almost any portable or force testing requirement.



• **Pie Tape** •  
Special tapes to measure outside and inside diameter.



• **High accuracy Thread/Plain gauges** •  
Accurate and customised thread/plain plug and ring gauges from ISSOKU Japan



• **Endoscopes / Borescopes** •  
Fibre optic endoscopes as small as 2.8meter diameter with articulation for applications areas like engines, gear boxes, differential clutches, cavities, castings along with many other areas.  
Advantages of using endoscopes are rapid diagnosis without dismantling and reduced inspection times.



### *Head Office*

Unit No. 802, Marathon Icon,  
Opp. Peninsula Corporate Park,  
Off Ganpatrao Kadam Marg,  
Lower Parel (West), Mumbai 400 013  
Tel: +91 22 61481800  
Fax: +91 22 61481883  
Email: [info@bombaytools.com](mailto:info@bombaytools.com)  
Website: [www.bombaytools.com](http://www.bombaytools.com)  
You Tube: [www.youtube.com/bombaytools](http://www.youtube.com/bombaytools)



*Mumbai Head Office*

Photo: Mr Laszyk



*Modern office with  
demo/application rooms*

### *Associates*

**Bangalore:** No.16/1, Old No.12, Fatima Elegance, 2nd Floor, 2nd Cross, S.G. Narayana Layout,  
Lalbagh Main Road, Bangalore 560 027.

Tel: +91 80 22237650 / 652 / 653 • Fax: +91 80 22237651 • Email: [bangalore@bombaytools.com](mailto:bangalore@bombaytools.com)

**Chennai:** 180 Broadway, 1st Floor, Chennai 600 108

Tel: +91 44 25393742, +91 44 25383775 • Email: [chennai@bombaytools.com](mailto:chennai@bombaytools.com)

**Hyderabad:** 1st Floor, D.No. 5-4-187/3 & 4/4, Soham Mansion, M.G. Road, Secunderabad 500 003

Tel: +91 40 66626604/27540798 • Fax: +91 40 27540799 • Email: [hyderabad@bombaytools.com](mailto:hyderabad@bombaytools.com)

**Delhi / NCR:** 5 L-123, N.I.T. Faridabad 121 001

Tel: +91 9811198598 • Email: [delhi@bombaytools.com](mailto:delhi@bombaytools.com)

**Kolkata:** [kolkata@bombaytools.com](mailto:kolkata@bombaytools.com)

**Pune:** [pune@bombaytools.com](mailto:pune@bombaytools.com)

**Nashik:** [nashik@bombaytools.com](mailto:nashik@bombaytools.com)

**Ahmedabad:** [gujarat@bombaytools.com](mailto:gujarat@bombaytools.com)

**Baroda:** [gujarat1@bombaytools.com](mailto:gujarat1@bombaytools.com)

